



HORSE POWER

Quarterly Newsletter
for

**Bright Horizons
Therapeutic Riding Center**

www.brighthorizonsriding.org

Fall 2010

**P.O. Box 1238
Newport, Oregon
97365**

(541) 961-4156

Board of Directors

Joanne Troy
President

Jeannine Brucha

Kathy Ramsey

Amy Cline

Staff

Polly Cohen
Director & NARHA
Instructor

Tammy Vance
Instructor In-Training

Haylie Martin
Instructor In-Training

Rachelle Goulet
Program Assistant

Amy Cline
Volunteer Coordinator



MEMBER CENTER

DREAM COMES TRUE!

On July 26, 2010, Bright Horizons realized a dream that was three years in the making - the installation of a Shur-Hands lift that will enable us to serve riders who utilize wheelchairs and are not able to transfer independently on to our horses. Coupled with our recently completed ramp and mounting area, we will now be able to expand our programs to an entire new group of riders who have previously been excluded due to lack of accessibility. The ramp and lift is the result of many donations of cash, materials and manpower which demonstrates what can be done when many sources collaborate to make things happen. The final lynchpin in the effort was the donation of the lift mechanism by Atonement Lutheran Church. They graciously donated the lift which had been utilized by a parishioner who had passed away. Funds for the overhead support rail and installation were made possible by a grant from the Siletz Tribal Charitable Fund. The ramp was constructed with materials donated by ProBuild Lumber with the generous donation of design and installation work by Mark Hanrahan. Of course the backs and hands of many Bright Horizons volunteers were also necessary to complete all of the work necessary for this project.



All of us at Bright Horizons are tremendously excited to start utilizing the lift. Volunteers have been working throughout the month of August to acclimate and train our horses to the new piece of machinery. Volunteer training will be conducted so that we can begin using the new lift during our upcoming Fall session.

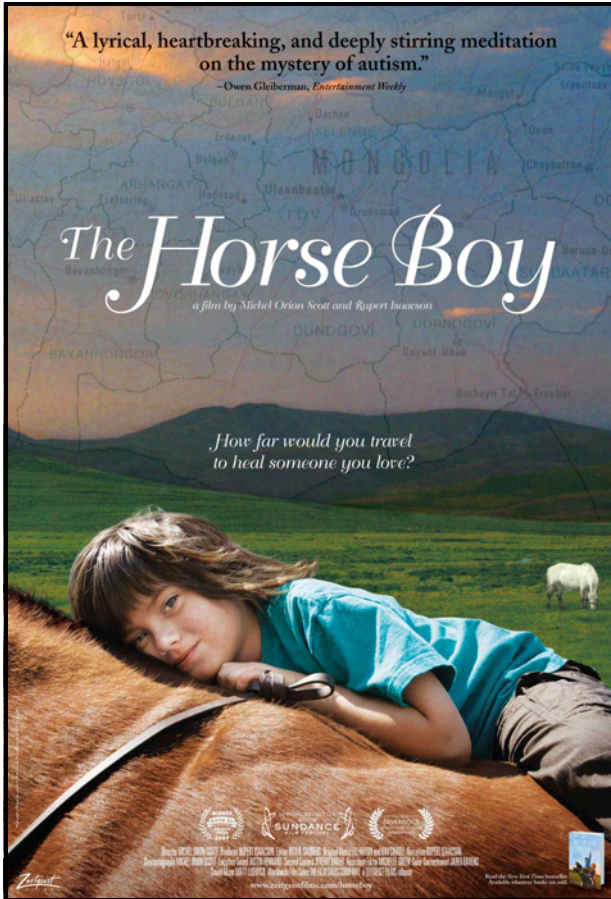
Stephanie Simpson is the mother of a rider who will now be able to ride with Bright Horizons and also a parishioner at Atonement Lutheran. It was in no small part due to her personal efforts that we were able to complete the work on this project. Her daughter who has been on a waiting list for over two years plans on riding in the upcoming Fall session. She told Polly Cohen, BHTRC Executive Director that Rachel "is beside herself with excitement and anticipation and cannot wait for September to arrive for her first ride".

Thanks again to everyone who had a hand in bringing this project to completion. It is just one more tangible demonstration of the power of collective efforts to achieve a goal. Bright Horizons cannot continue it's mission without all of our supporters. Please consider a tax-deductible contribution to help us continue with our mission.

Mission Statement

Bright Horizons Therapeutic Riding Center exists to improve the physical and emotional wellbeing of individuals and their families through therapeutic equestrian activities built on professionalism and trust with a focus on community education, communication and teamwork.

Bright Horizons Movie Night



Come join us at 7 P.M., September 18, 2010 at the OCCC Newport campus for a special showing of *The Horse Boy*. This is a critically acclaimed film that follows a Texas couple and their autistic son as they trek on horseback through Outer Mongolia in an attempt to find healing for their son.

Directed by Michel Scott, *The Horse Boy* gives voice to the thousands who display amazing courage and creativity everyday in the battle against autism.

We are suggesting a donation of \$5 (\$10 for families). Funds raised will create scholarships for riders newly able to access our program because of the recently completed wheelchair accessible lift system.

We will also be introducing our NARHAbar program. This is a unique new fundraising initiative, endorsed by NARHA, our parent organization. It is designed to engage our center riders and participant families and friends in helping

contribute to our bottom line. NARHAbars are high quality milk and dark chocolate bars, with beautiful horse packaging and inspirational messages that will be for sale at \$3.50. NARHA receives a small percentage of sales directly from the product distributor so we will be contributing back as a member center. NARHA offers educational opportunities and global advocacy for equine-assisted activities and therapies in addition to accrediting instructors and setting industry standards of excellence.

Please come celebrate the accomplishment of our dream lift with this moving film!

Event Sponsors—Feed Corral and Oregon Coast Bank

Once again two area businesses have stepped up to help Bright Horizons! Both long-time supporters, Feed Corral and Oregon Coast Bank are assisting to offset our costs. The gift from Feed Corral will help us with movie rental and license fees. Oregon Coast Bank will be sponsoring our NARHAbar program which will launch the evening of the movie. Please join us in thanking these businesses with your support to them!

BRIGHT HORIZONS DVD NOW AVAILABLE!

In July the Toledo High School Video Production Class under the direction of teacher Peter Vince completed our DVD and we are **really** pleased! This video offers us a wonderful tool for donor development as well as community education about Bright Horizons' mission, programs and the benefits of equine assisted activities. If you would like a copy or have suggestions of groups where we may show it please contact Polly at 541 961-4156. You can also view it on our website.

Thanks again to Toledo High School for this great gift.



Video Crew Accepts BH Thanks

New Saddle and Halter Raffle Date Extended

We have had to extend our saddle and halter raffle until September 12, 2010. We need to sell enough tickets to cover the cost of the raffle items before we can complete the raffle. These are two really fantastic prizes and we really hope you will consider buying a ticket. While the limit on the number of tickets sold is 500, we are no where near that number so your odds of winning are pretty darn good. Check out our website at www.brighthorizonsriding.org for the specifics on this Big Horn Reining Saddle and gorgeous halter. I know you are going to want to make them yours. Tickets on Sale at Feed Corral or by calling Polly at (541) 961-4156, polly@brighthorizonsriding.org or Joanne at (541) 961-7363, joanne@brighthorizonsriding.org.

Barn Projects Galore



Bright Horizons volunteers David Johnson and Amy Cline helping the ramp painting

As they say the devil is in the details and that is especially true when trying to put the finishing touches on our many barn projects. The summer has been particularly busy with the completion of the wheelchair ramp and installation of the lift. Volunteers converged on the barn on July 13 & 14th to put the finishing touches on the ramp. A handrail was installed, the ramp painted and texture added to the surface to help with traction. The footing in the ramp area was improved and leveled and the whole area given an overall clean up. It is really exciting for everyone involved to see this one in the done column.

July also saw the creation of the first elements of our outdoor trail and sensory obstacle course. Our great crew of volunteers set up a really fun course that challenges both the horses and riders. The outdoor arena was regraded with the help of our instructor in training Tammy Vance and our neighbor Scott Lager. It really has been a great addition and created quite a bit of fun for the summer. Joanne Troy built a "cowboy curtain" utilizing some really fun and bright strips of vinyl. All of our horses have demonstrated that they are ready and willing to take on all challenges. In the coming months we hope to continue adding more and more elements to our course to keep it interesting and challenging for both our horses and riders.

Upcoming improvements that we will be organizing work parties for include the installation of large mirrors which were donated by Habitat ReStore, and fencing for the outdoor arena. If you want to help participate with either of these projects or want to donate materials to help make these projects happen get in touch with Polly. We are looking for six sheets of 4' X 8' exterior grade plywood, pressure treated 2" X 4" and really any building materials you might have that you think might be useful.

Fall Classes Starting September 16, 2010

September 2010

October 2010

WK	S u n	Mo n	Tu e	W e d	Thu	Fri	Sat		Wk	Su n	Mo n	Tu e	W e d	Th u	Fri	Sat	
OFF				1	2	3	4								1	2	
OFF	5	6	7	8	9	10	11		1	3	4	5	6	7	8	9	
1	12	13	14	15	16	17	18			10	11	12	13	14	15	16	
	19	20	21	22	23	24	25		OFF	17	18	19	20	21	22	23	
	26	27	28	29	30				OFF	24	25	26	27	28	29	30	
										31							

Fall Session Begin September 16th, 2010 and is 5 weeks long.

We will be having classes Thursday, Friday and Saturday. We are offering classes for riders with disabilities and any one else wanting a fun and safe place to learn horsemanship skills. Bring your own horse or ride one of our 7 skillfully trained horses. Our gates are wide open now that we have the wheel chair accessible ramp and lift.

Fall Session Costs:

Private Lesson (1 rider & 1/2 hour): \$35.00 per lesson

Total Cost for 5 weeks: \$175.00

Semi-Private Lesson (2 riders & 45 minutes): \$35.00 per lesson) Total Cost for 5 weeks: \$175.00

Group Lesson (3-5 riders & 1 hour): \$30.00 per lesson

Total Cost for 5 weeks: \$150.00

Please contact Polly Cohen for a rider packet and Fall sign up at 961-4156 or polly@brighthorizonsriding.org.



Welcome Bella!

Bella is a 14 year old Bay Quarter Horse Mare. She is our wisest horse in the barn! Bella excels on the ramp and enjoys our new obstacle course. She nickers at you when you walk into the barn or dismount. Bella is kind, attentive and careful when working with small children. We are happy to have this big "doe" eyed sweet girl in the program. Thank you Julie Thorton of Sweet Home, for leasing this great mare to us!

UPCOMING VOLUNTEER TRAININGS

September 15, 2010 6 – 7:30 P.M.

September 25, 2010 4 - 5:30 P.M.

Horsemanship Riding Program



Riding Lessons

Half Hour Private Class: \$35.00 per ride

1 Hour Group Lesson (2-5 riders): \$30.00 per ride

Field Trips and Birthday Parties available too!

Bright Horizons is a safe, fun and relaxed place to learn about horses. We have classes available for beginners to advanced riders. Ages 3 to 90! Come learn basic riding skills, English, western, horse soccer, extreme trail courses, and vaulting!

Please contact Polly Cohen at (541)961-4156

Bright Horizons Therapeutic Riding Center** Barn Located at 1925 Logsden Rd. Siletz, OR 97380
More information and directions at www.brighthorizonsriding.org

Bright Horizons Outreach Programs 4 H Opportunities Club



On July 28 - 29, 2010 Bright Horizons began our connection with the 4 H Opportunities Club - a program for children who have disabilities. The goals of the club are to help children find their gifts and their passion, and to increase their quality of life and their activity in the community. For more information on this program contact Terry Persson at 541-265-0486.

1st Annual Oregon Coast Extreme Trail Weekend September 11 & 12, 2010

Presented by Seal Rock Stables & Jasmine Lechner/Pacific Coast Horsemanship

You are going to want to join us for a full weekend of trail riding activities.

Saturday, September 11, 2010 a full day trail clinic presented by the 2010 NW Horse Expo—Mustang Makeover winner Jasmine Lechner will be offered.

Sunday, September 12, 2010 will be a Trail Ride followed by lunch, silent auction and prize raffles.

Proceeds to benefit Bright Horizons Therapeutic Riding Center

Trail Obstacle Course will be Open on Sunday Also
Camping, meals, entertainment and a Saturday night Bonfire will all
combine to make this a memorable weekend.
Join us for the whole weekend or just come for the day

Saturday, September 11, 2010— Day Long Trail Clinic

10:00—Noon Group Trail Clinic \$50 per person (all day)

Noon—1:30 Lunch on Your Own

1:30—4:00 Open Trail Obstacle Course with Individual Instruction

Saturday Evening—Camping, Spaghetti Dinner, Bonfire & Entertainment Sunday, September 12, 2010

8:00 am—10:00 am Breakfast & Registration

9:30 am—Noon Trail Ride \$25 includes lunch & obstacle course

12:30 pm Lunch, Silent Auction, Prize Raffles

Trail Obstacle Course Open All Day Sunday

\$10 per person (included for trail ride participants)

Discounted Full Weekend Packages Available – Call For Prices

Limited Availability of Campsites, Stalls and Paddocks

For Reservations and Pricing Call: Jasmine (541) 961-5972, sealrockstables@hotmail.com or Polly (541) 961-4156, info@brighthorizonsriding.org Seal Rock Stables location From Newport take HWY 101 South 8 miles, Left onto Beaver Creek Rd (directly across from Ona Beach State Park) go one mile to fork, take a right onto S. Beaver Creek Rd. We are located one mile up on right. Look for our sign



WISH LIST

ARENA

Sprinkler Tripod with wheels
20 yards of sand
6 sheets of exterior grade plywood
80 X 80 Round pen panels

OFFICE ITEMS

Printing Paper
Brothers Printer Ink (Color and Black)
Stamps

TACK ROOM

Western Saddles 15 & 16 inch
Devonshire Boots
Winter Horse Blankets
Leather Grooming Halters

HORSES

Allegra Senior Grain
Bedding Pellets
Salt Blocks
Quality Grass Hay

SPONSOR ONE OF OUR 5 EQUINE PARTNERS

The Bright Horizons Horse Sponsorship Program helps pay for feed, bedding, horseshoes, veterinary care, tack, and stall management.

Sponsorship Recognition includes:

- * A 100% tax-deductible contribution (your sponsorship gift is restricted to horse care)
- * A photo of your horse and plaque.
- * The sponsor's name(s) placed on a special stall sign in the barn
- * Recognition at Bright Horizons horse shows, parades and other events

Cost: \$3,000.00 for a year sponsorship of one horse.

For more information please call Polly Cohen at (541)961-4156.



Charitable Deductions:

Bright Horizons Therapeutic Riding Center is a 501 (c) (3) non-profit organization